

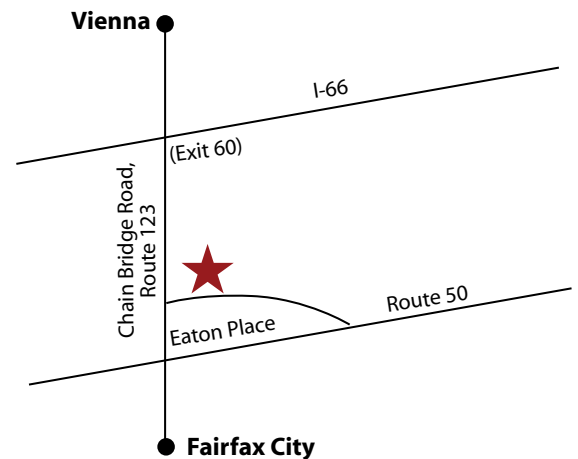
10400 EATON PLACE

FAIRFAX, VIRGINIA



SPACE AVAILABILITY

- 1st Floor 1,046 SF suite, 2,340 SF suite, 2,702 SF suite and 4,376 SF suite
- 2nd Floor 1,099 SF suite and 13,190 SF (SCIF) suite
- 3rd Floor 3,236 SF suite and 3,969 SF (SCIF) suite
- 4th Floor 2,670 SF suite and 4,069 SF suite
- \$20.00 PSF (non-SCIF) - \$22.00 PSF (SCIF) Full Service, | 3 to 10 year term
- Strategically located between I-66, Rte. 123 and Rte. 50
- Immediately adjacent to Best Western Hotel
- Minutes from restaurants and shops
- Bus stop in front of building (to Vienna Metro)
- New roof (2002) and new HVAC units (2000)
- Newly renovated common area



MIKE KUEHN

mike.kuehn@transwestern.net | 703.749.9410

SUSAN MALONE

susan.malone@transwestern.net | 703.749.9422

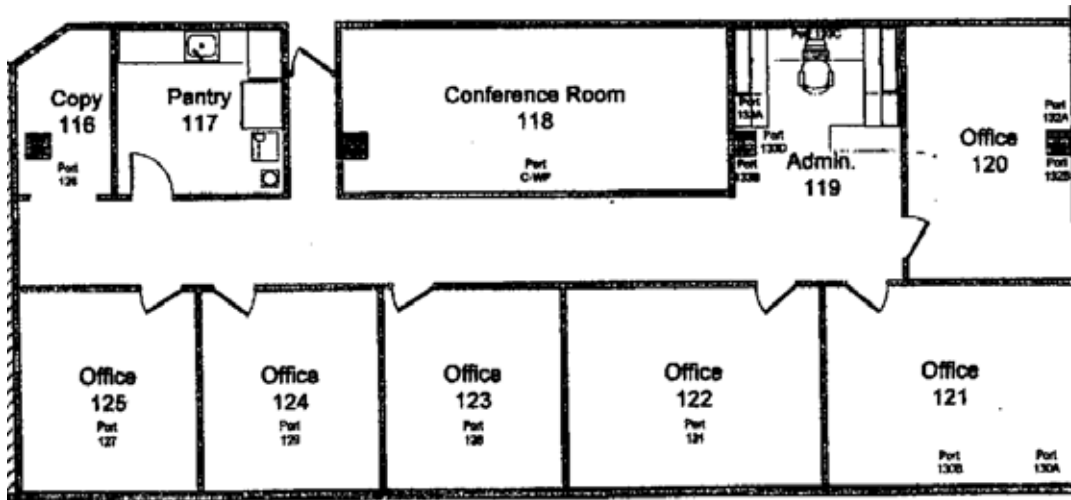


8614 Westwood Center Drive | Suite 800 | Vienna, VA 22182

10400 EATON PLACE

FAIRFAX, VIRGINIA

FLOOR PLANS

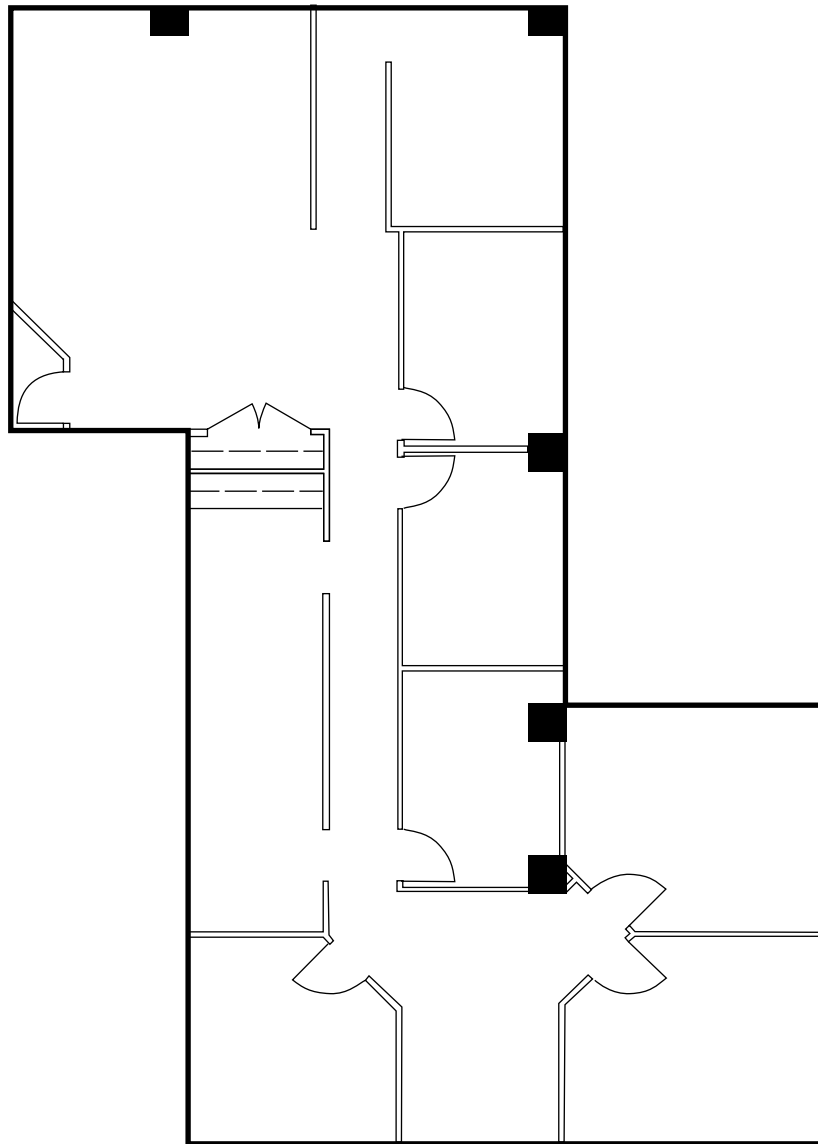


Suite 100
2,702 SF

10400 EATON PLACE

FAIRFAX, VIRGINIA

FLOOR PLANS

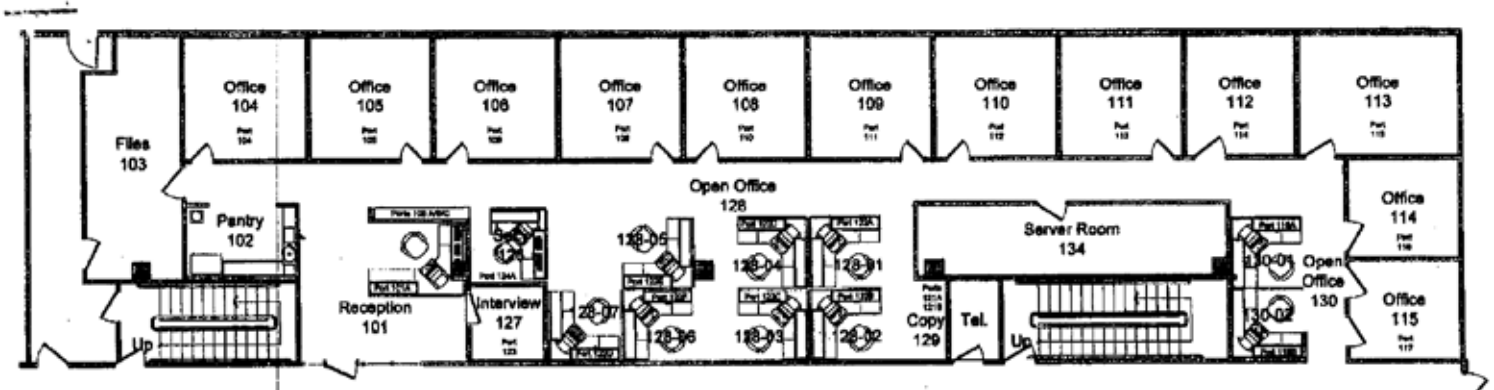


Suite 105
2,340 SF

10400 EATON PLACE

FAIRFAX, VIRGINIA

FLOOR PLANS



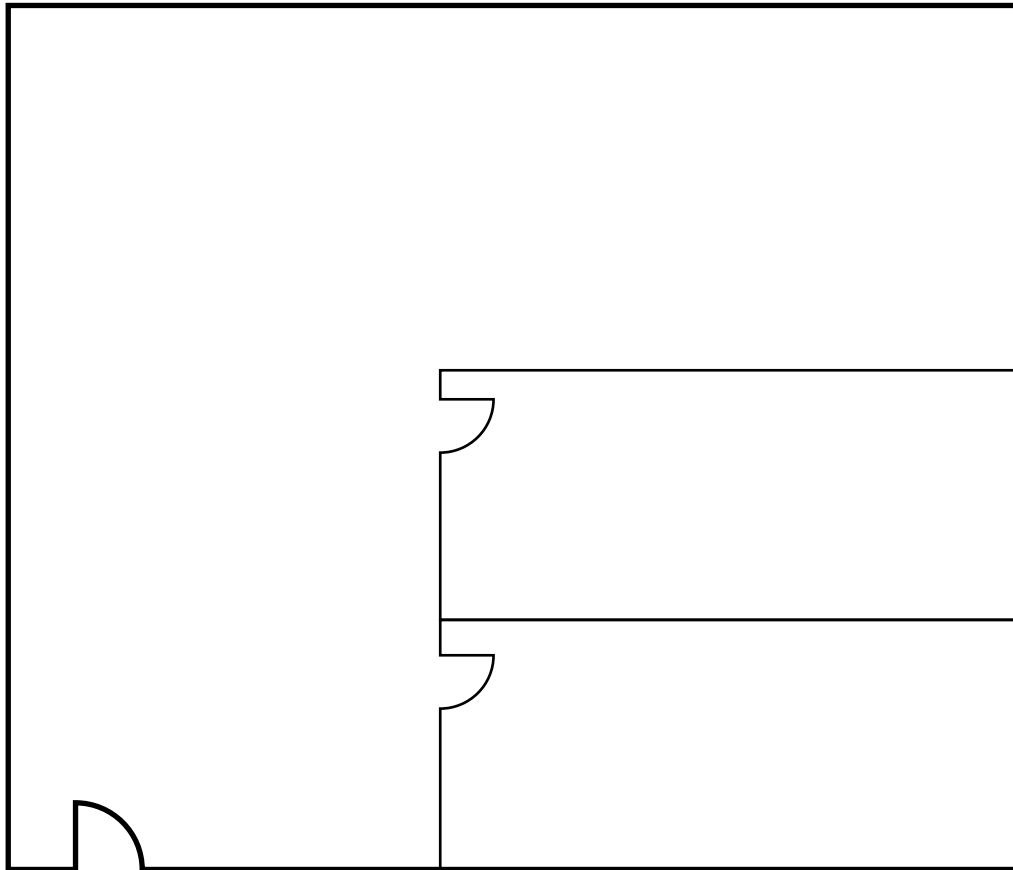
Suite 107
4,376 SF

10400 EATON PLACE

FAIRFAX, VIRGINIA

FLOOR PLANS

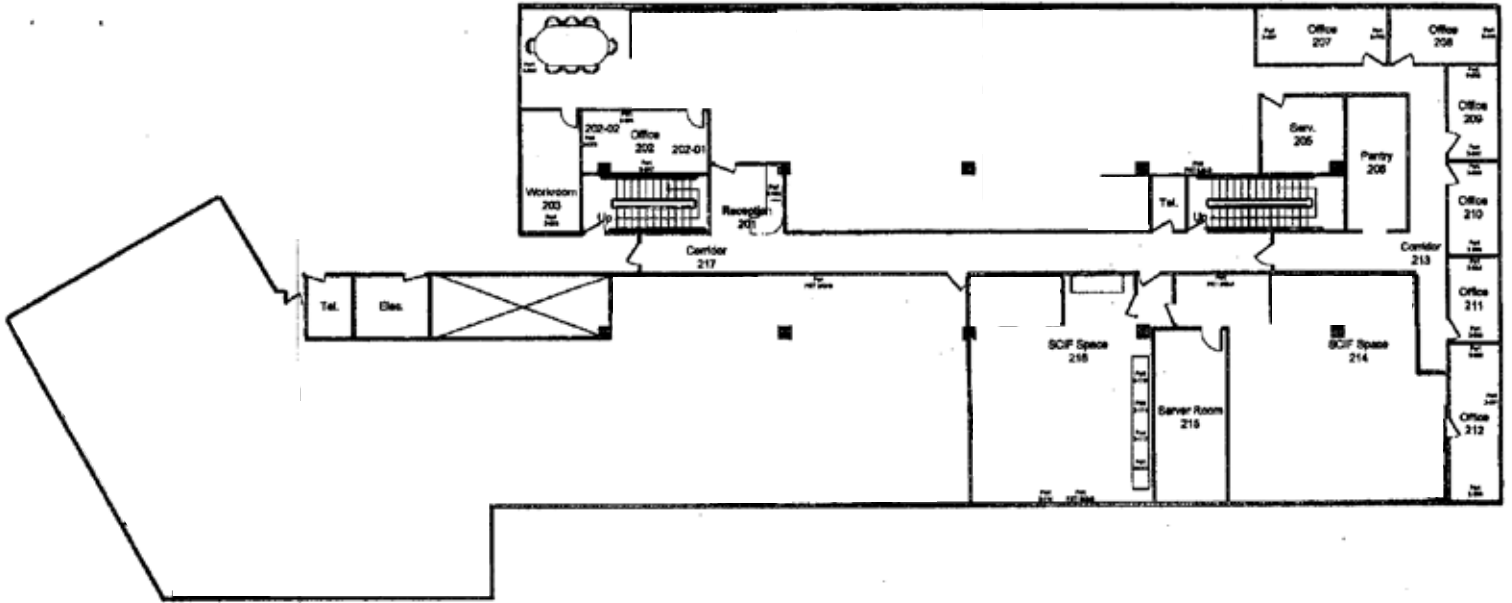
Suite 140
1,046 SF



10400 EATON PLACE

FAIRFAX, VIRGINIA

FLOOR PLANS

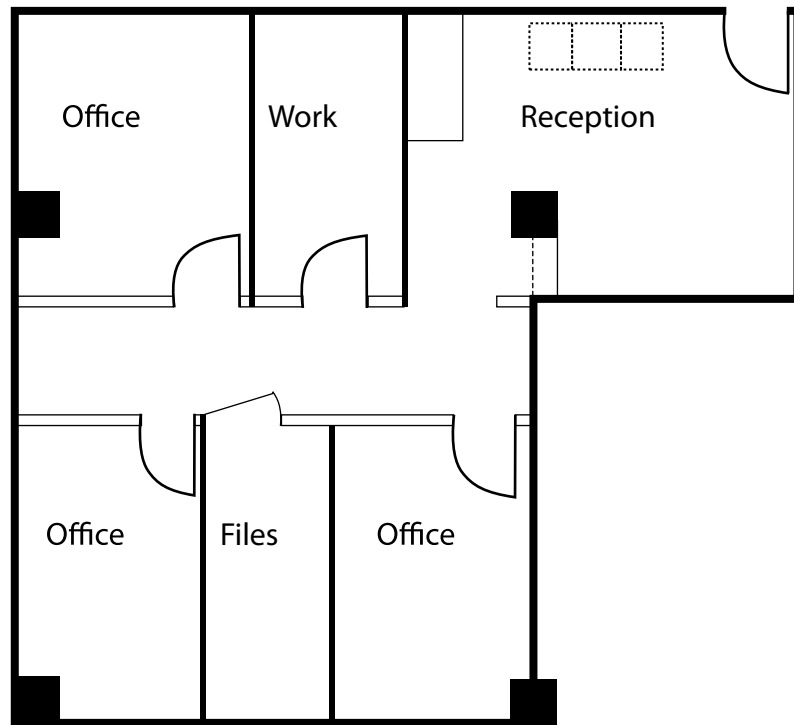


Suite 200
13,190 SF
SCIF

10400 EATON PLACE

FAIRFAX, VIRGINIA

FLOOR PLANS

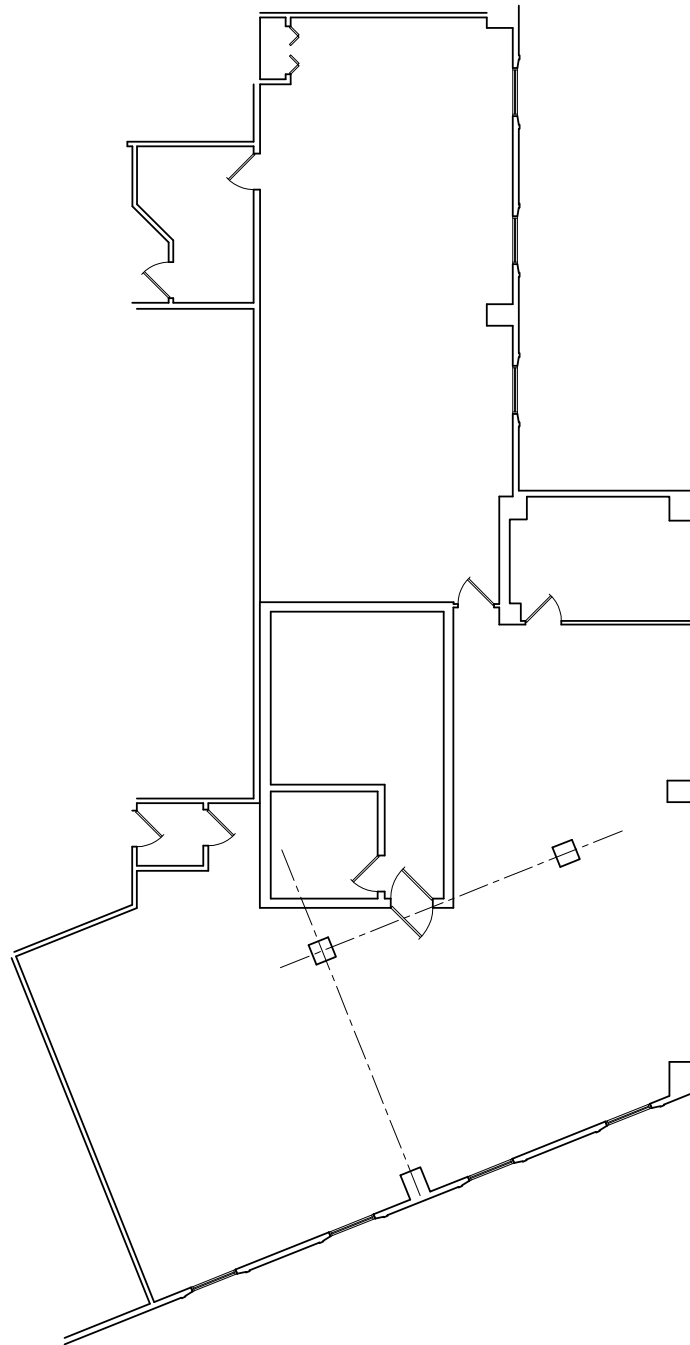


Suite 212
1,099 SF

10400 EATON PLACE

FAIRFAX, VIRGINIA

FLOOR PLANS

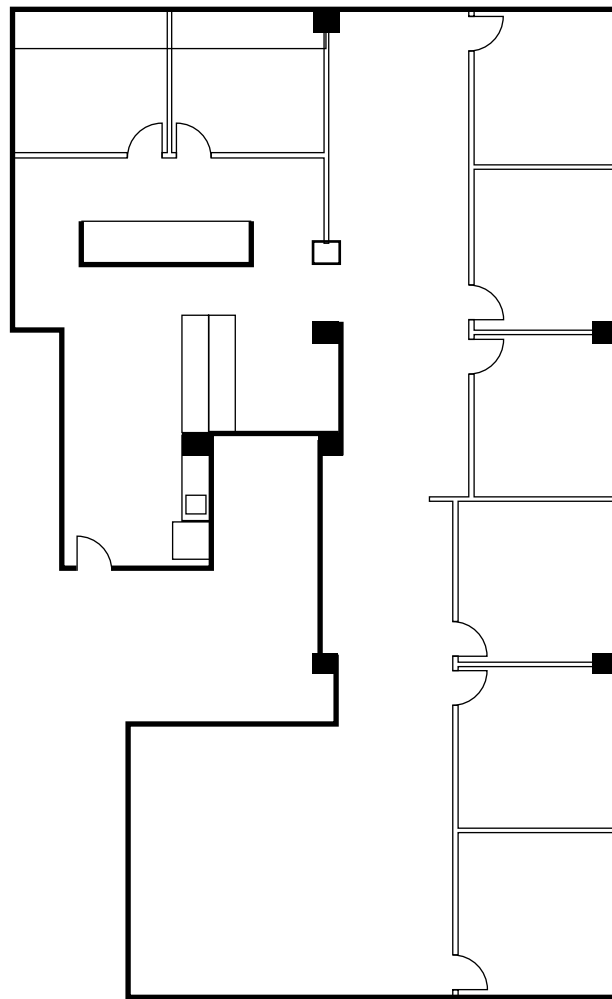


Suite 309
3,969 SF
SCIF

10400 EATON PLACE

FAIRFAX, VIRGINIA

FLOOR PLANS

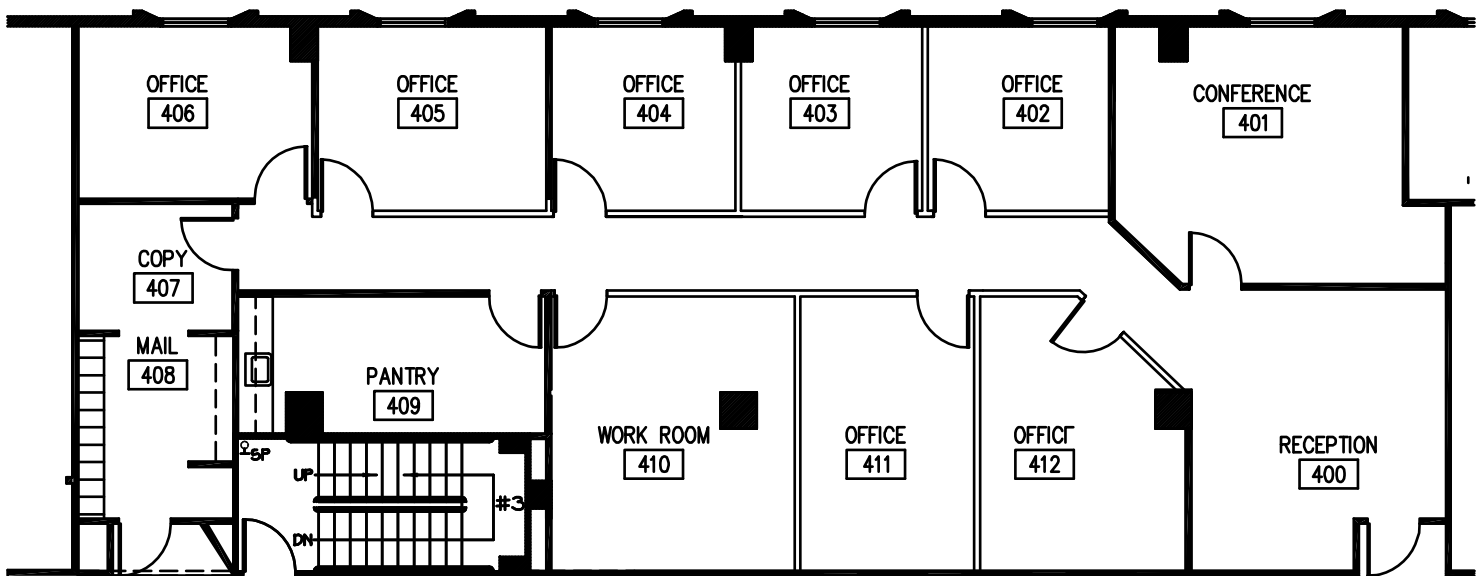


Suite 314
3,236 SF

10400 EATON PLACE

FAIRFAX, VIRGINIA

FLOOR PLANS

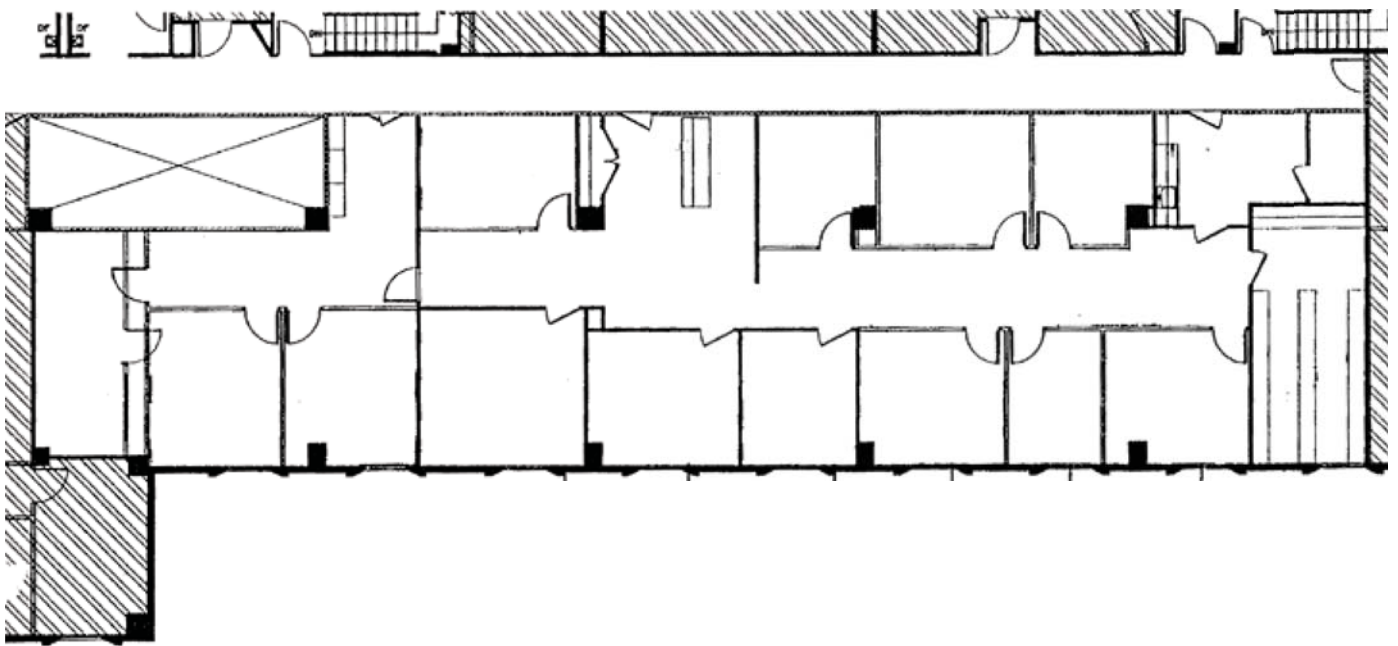


Suite 400
2,670 SF

10400 EATON PLACE

FAIRFAX, VIRGINIA

FLOOR PLANS



Suite 420
4,069 SF